



LARYNGOPHARYNGEAL REFLUX

ABOUT

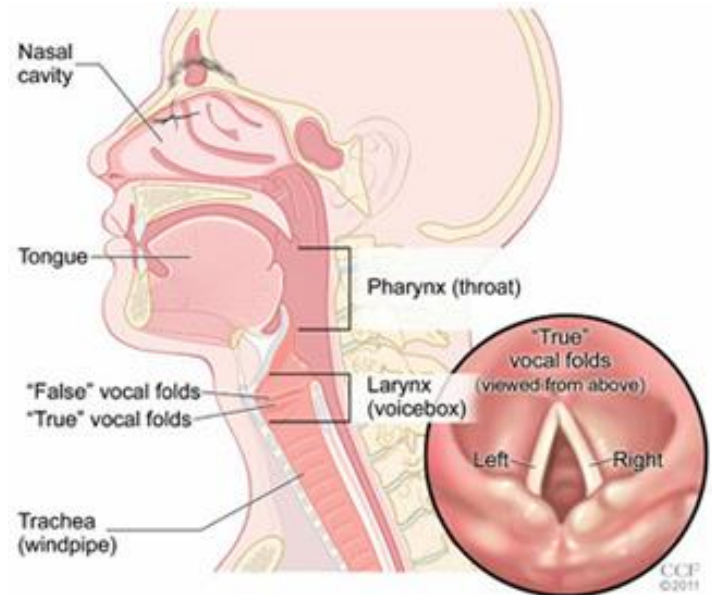
Laryngopharyngeal reflux (LPR) is similar to another condition - GERD -- that results from the contents of the stomach backing up (reflux). But the symptoms of LPR are often different than those that are typical of gastroesophageal reflux disease (GERD)

Symptoms

Symptoms in infants and children may include:

- Hoarseness
- "Barking" or chronic cough
- Reactive airway disease (asthma)
- Noisy breathing or pauses in breathing (apnea)
- Trouble feeding, spitting up, or inhaling food
- Trouble gaining weight Excessive throat clearing
- Persistent cough
- Hoarseness
- A "lump" in the throat that doesn't go away with repeated swallowing

Other symptoms may include:



**DR GOUDA RAMESH ENT CENTRE, BESIDE SRIDEVI ASIAN MALL,
OPP: KALYANI HOSPITAL, BUS STAND ROAD, HANAMKONDA.**

PHONE : 0870-2524977

MOBILE : +91 - 91778 12783

WWW.GOUDA.ENT.IN