



THYROID CONDITIONS

ABOUT

Any dysfunction of the butterfly-shaped gland at the base of the neck (thyroid).

Most common types

- **THYROID NODULES**

A lump in the thyroid, the butterfly-shaped gland at the base of the neck.

- **HYPOTHYROIDISM**

A condition in which the thyroid gland doesn't produce enough thyroid hormone.

- **HYPERTHYROIDISM**

The overproduction of a hormone by the butterfly-shaped gland in the neck (thyroid).

- **GOITER**

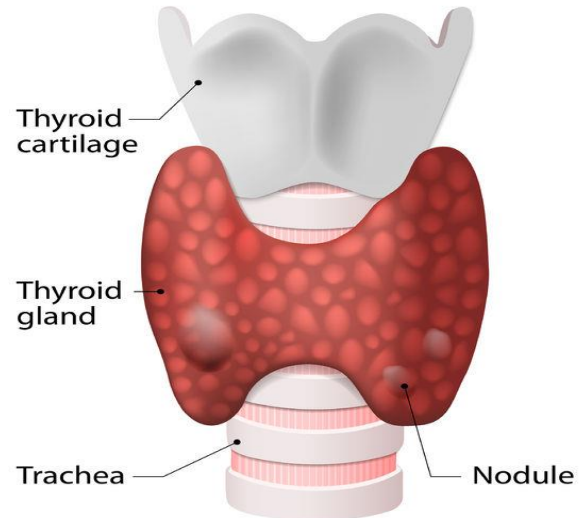
Abnormal enlargement of the butterfly-shaped gland below the Adam's apple (thyroid).

- **THYROIDITIS**

Inflammation of the thyroid, the butterfly-shaped gland in the neck.

- **THYROID CANCER**

A cancer of the thyroid, the butterfly-shaped gland at the base of the neck.



Thyroid nodules

A lump in the thyroid, the butterfly-shaped gland at the base of the neck.

Symptoms

Requires a medical diagnosis

Most thyroid nodules don't cause symptoms.

Can have no symptoms, but people may experience:

Common symptoms: lump in the neck or enlarged thyroid

Treatments

Treatment depends on severity

The majority of thyroid nodules don't require treatment. Treatment options for larger or cancerous nodules, or nodules that produce additional thyroid hormones, may include medication or surgery.

Supportive care

MONITORING FOR CHANGES OR IMPROVEMENT

Monitoring a medical condition instead of taking action right away.

Specialists

ENDOCRINOLOGIST

Treats metabolic and hormone disorders.

PRIMARY CARE PROVIDER (PCP)

Prevents, diagnoses and treats diseases.

OTOLARYNGOLOGIST

Treats ear, nose and throat disorders.

Hypothyroidism

A condition in which the thyroid gland doesn't produce enough thyroid hormone.

Symptoms

Requires a medical diagnosis

Major symptoms include fatigue, cold sensitivity, constipation, dry skin and unexplained weight gain.

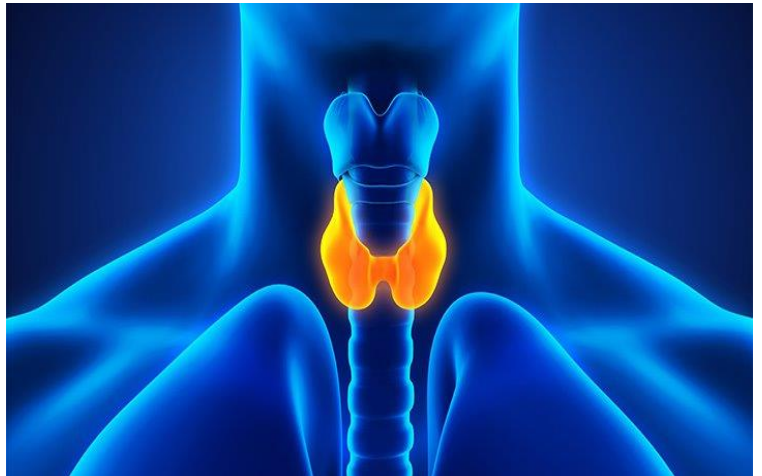
People may experience:

Developmental: delayed puberty or slow growth

Whole body: lethargy or feeling cold

Hair: hair loss or dryness

Also common: brittle nails, constipation, dry skin, enlarged thyroid, high cholesterol, irregular uterine bleeding, irritability, sensitivity to cold, sexual dysfunction, slow heart rate, sluggishness, or weight gain



Goitre

About

Abnormal enlargement of the butterfly-shaped gland below the Adam's apple (thyroid).

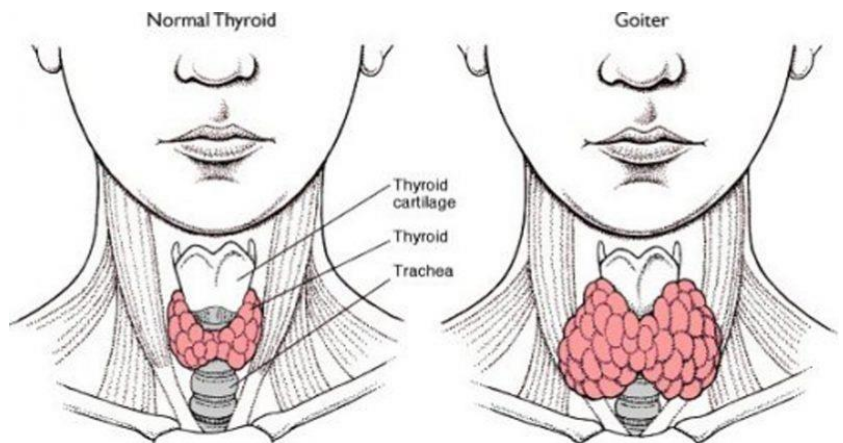
Symptoms

Not all goitres cause symptoms. Symptoms that do occur might include swelling and coughing. Rarely, symptoms may include throat tightness or trouble breathing.

Can have no symptoms, but people may experience:

Neck: lump or swelling

Also common: coughing, fast heart rate, heat intolerance, shortness of breath, throat tightness, underactive thyroid, or weight gain



Thyroiditis

About

Inflammation of the thyroid, the butterfly-shaped gland in the neck.

Symptoms

Requires a medical diagnosis

There may be no symptoms. When symptoms occur, they may vary depending on the stage of the inflammation.

Can have no symptoms, but people may experience:

Whole body: excess sweating, fatigue, heat intolerance, or feeling cold

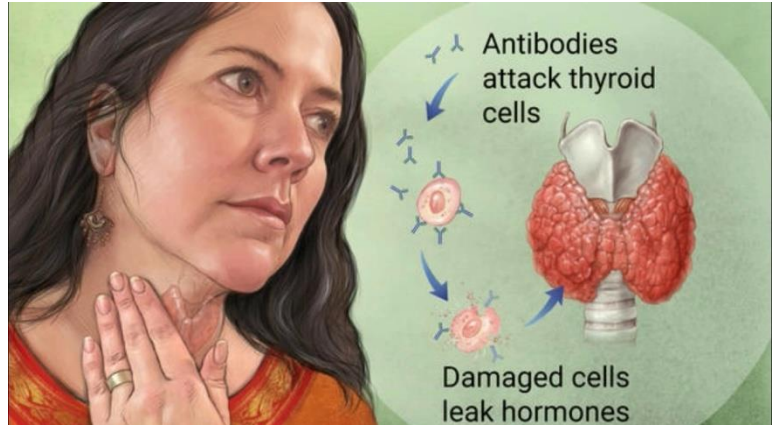
Gastrointestinal: unusually frequent defecation or water retention

Mood: anxiety or nervousness

Weight: weight gain or weight loss

Eyes: abnormal protrusion of eyes or puffy eyes

Also common: dry hair, dry skin, enlarged thyroid, fast heart rate, irregular menstruation, muscle weakness, overactive thyroid, sensitivity to cold, sexual dysfunction, tremor, or underactive thyroid



Treatment

Treatment depends on severity

Treatment is focused on the underlying cause as well as regulating thyroid function.

Medical procedure

RADIOACTIVE IODINE THERAPY

A radioactive medicine taken by mouth to reduce the functioning of the thyroid gland or completely destroy it.

Thyroid cancer

About

A cancer of the thyroid, the butterfly-shaped gland at the base of the neck.

Symptoms

Requires a medical diagnosis

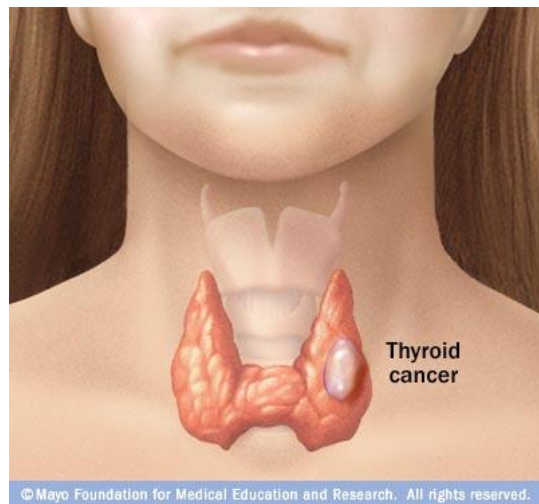
Some people have no symptoms. Others may notice a lump in the neck.

People may experience:

Pain areas: in the neck

Neck: enlarged lymph nodes, lump, or swelling

Also common: thyroid nodules



© Mayo Foundation for Medical Education and Research. All rights reserved.

Treatment

Treatment depends on stage

Treatments, which are usually successful, include surgery, hormone therapy, radioactive iodine, radiation and in some cases chemotherapy.

Medical procedure

RADIATION THERAPY

Treatment that uses x-rays and other high-energy rays to kill abnormal cells.

Medications

ANTI THYROID AGENT

Prevents the thyroid gland from making or releasing thyroid hormone.

HORMONE

Affects body processes by regulating the activity of the organs.

Surgery

THYROID REMOVAL

Surgical removal of all or part of the thyroid gland.

ENDOCRINE SURGERY

Surgical treatment of the glands that produce hormones in the body. For example, to remove a tumour on the gland.

**DR GOUDA RAMESH ENT CENTRE, BESIDE SRIDEVI ASIAN MALL,
OPP: KALYANI HOSPITAL, BUS STAND ROAD, HANAMKONDA.**

PHONE : 0870-2524977

MOBILE : +91 - 91778 12783

WWW.GOUDA ENT.IN